

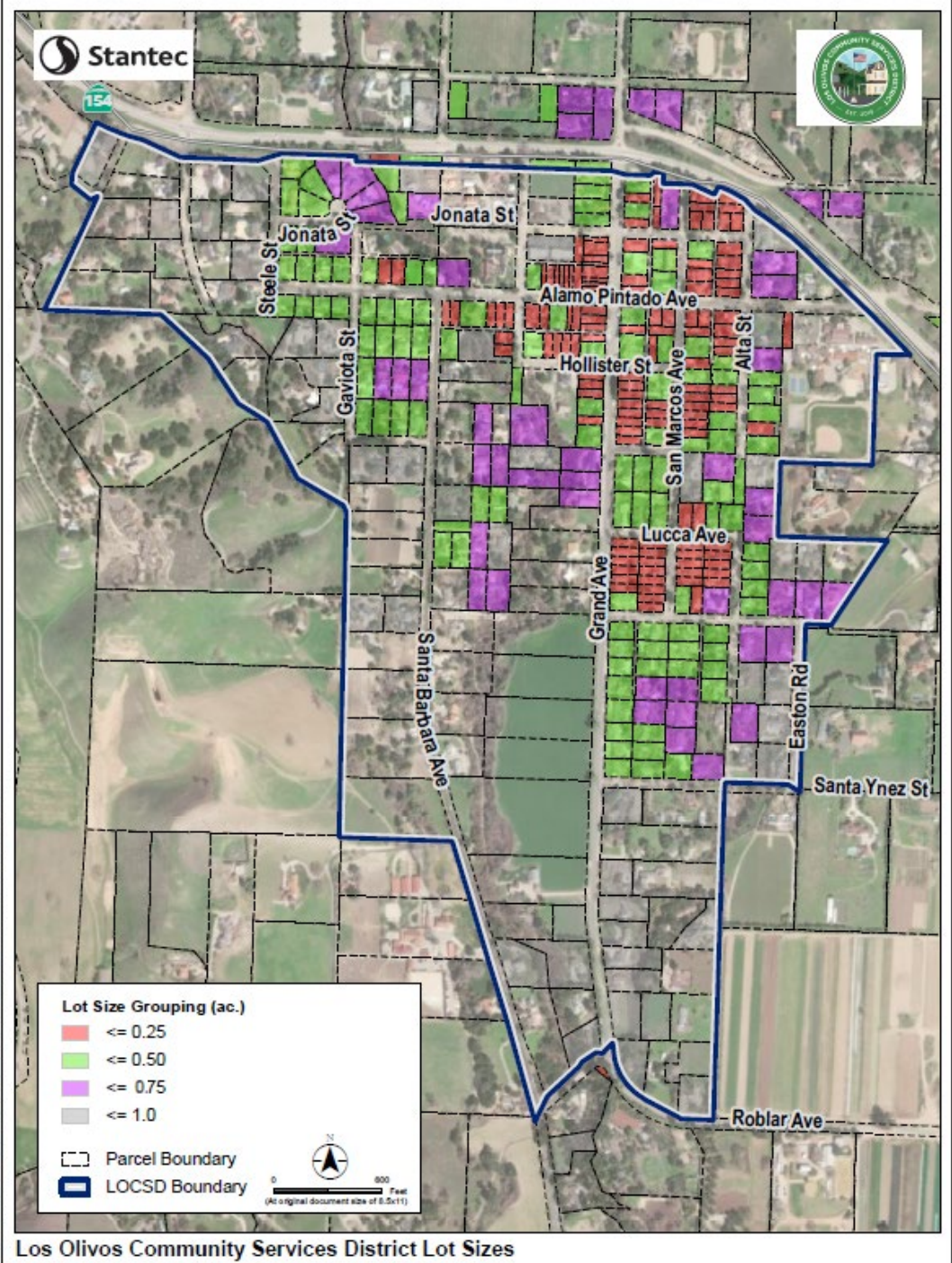
A Hybrid Approach for Los Olivos Community Services District

A look at collection and zones
by the Technical Subcommittee





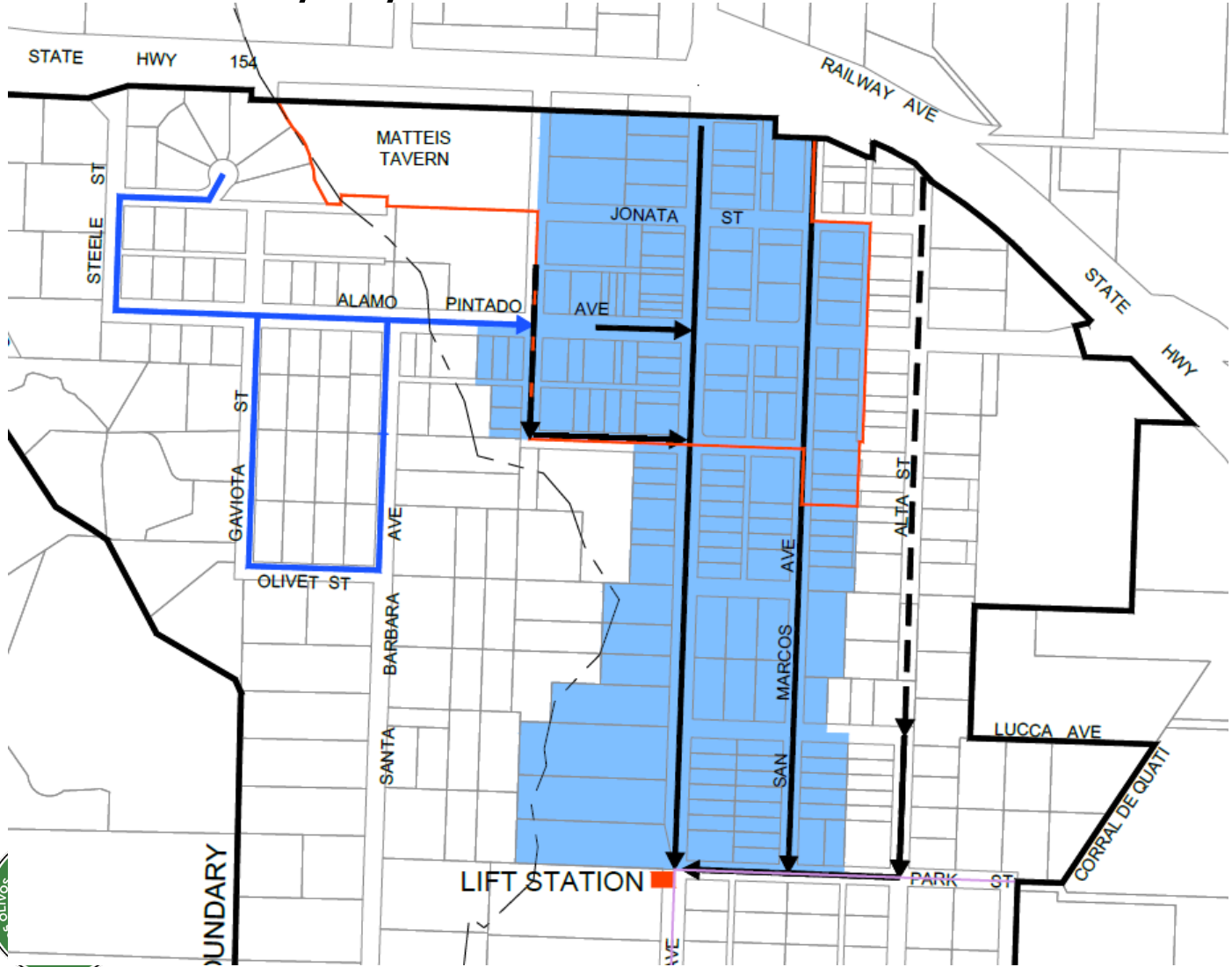
Lot Sizes (from May meeting)



Los Olivos Community Services District Lot Sizes



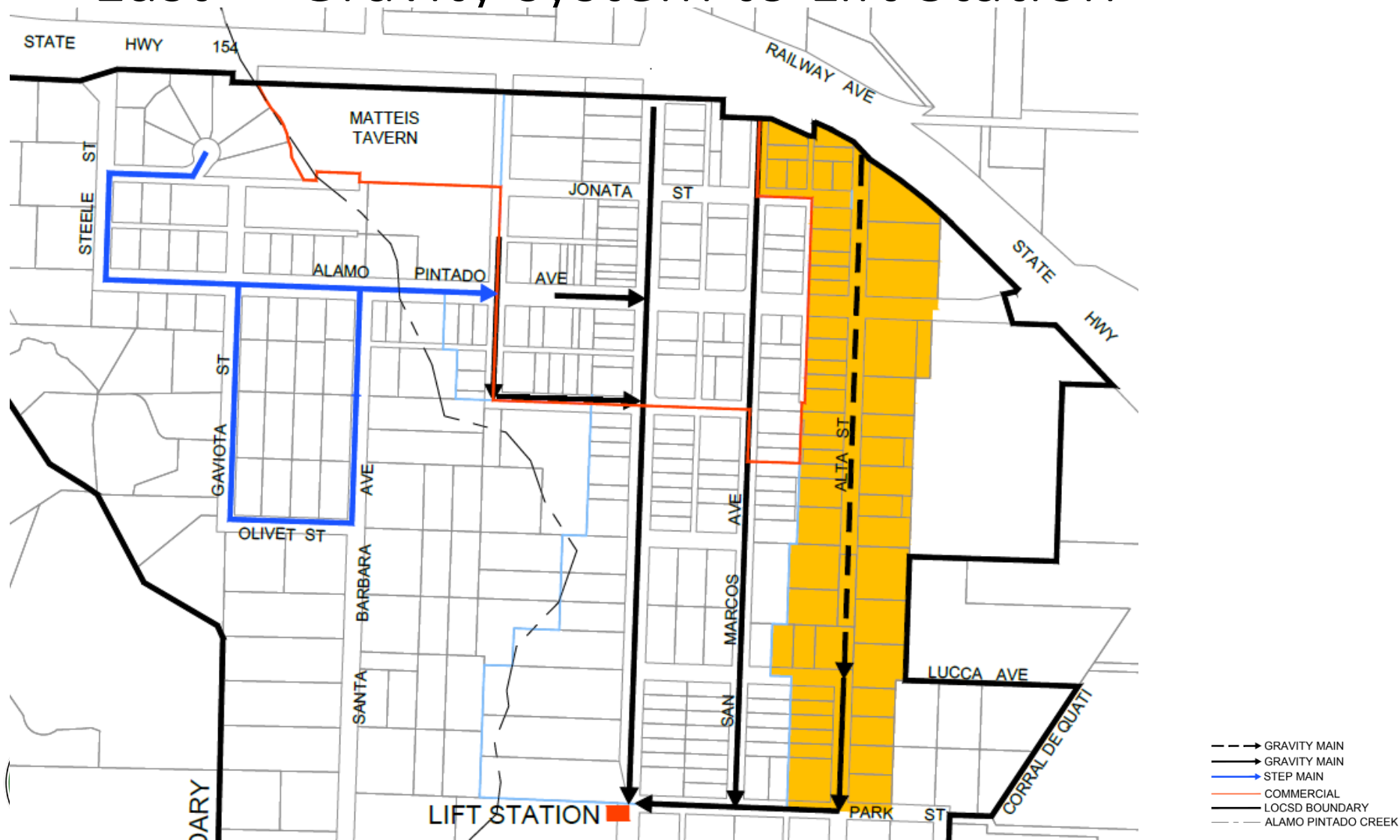
Zone 1 - Downtown Core and Small Lots – Gravity system to Lift Station



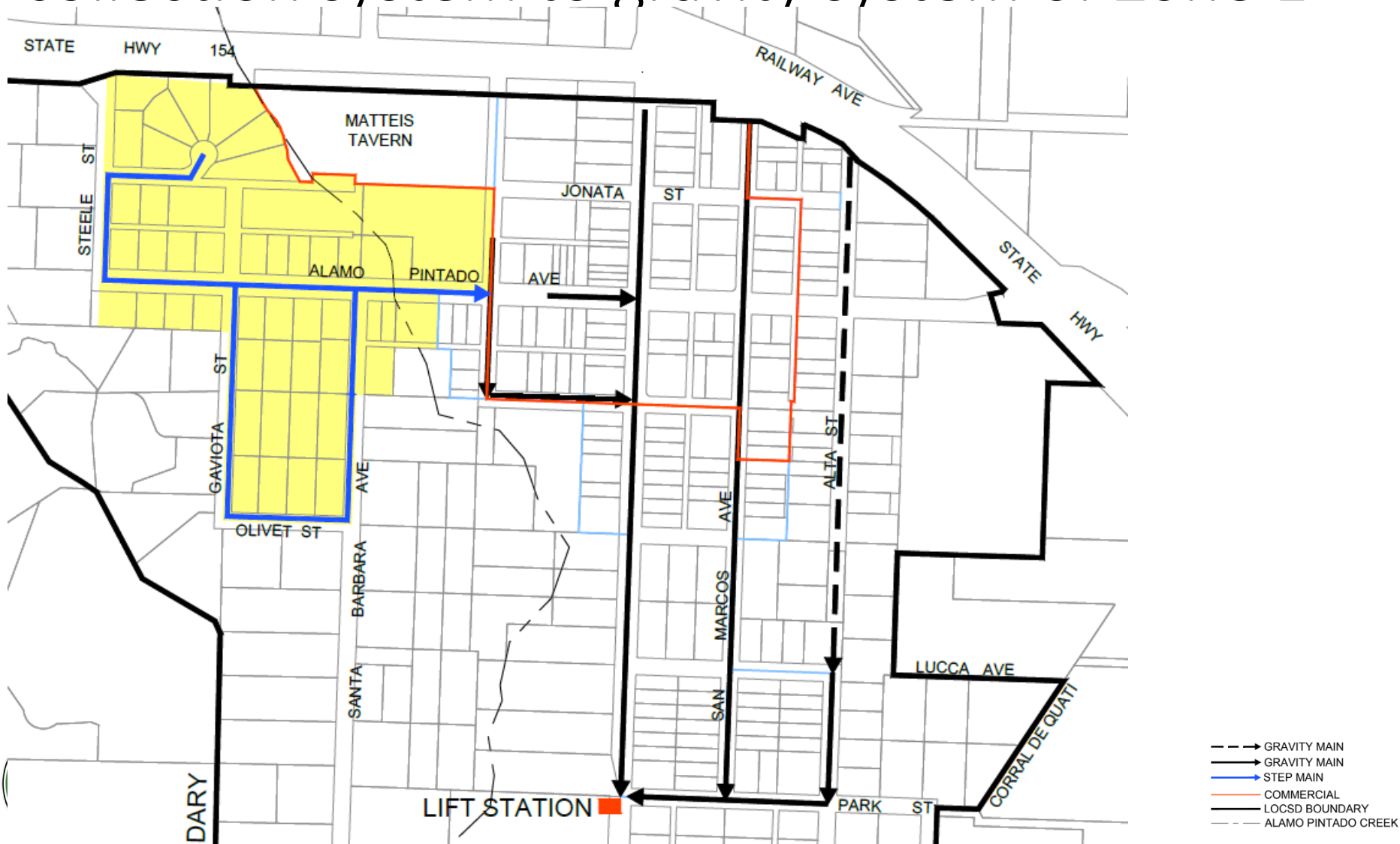
- GRAVITY MAIN
- GRAVITY MAIN
- STEP MAIN
- COMMERCIAL
- LOCSD BOUNDARY
- - - ALAMO PINTADO CREEK



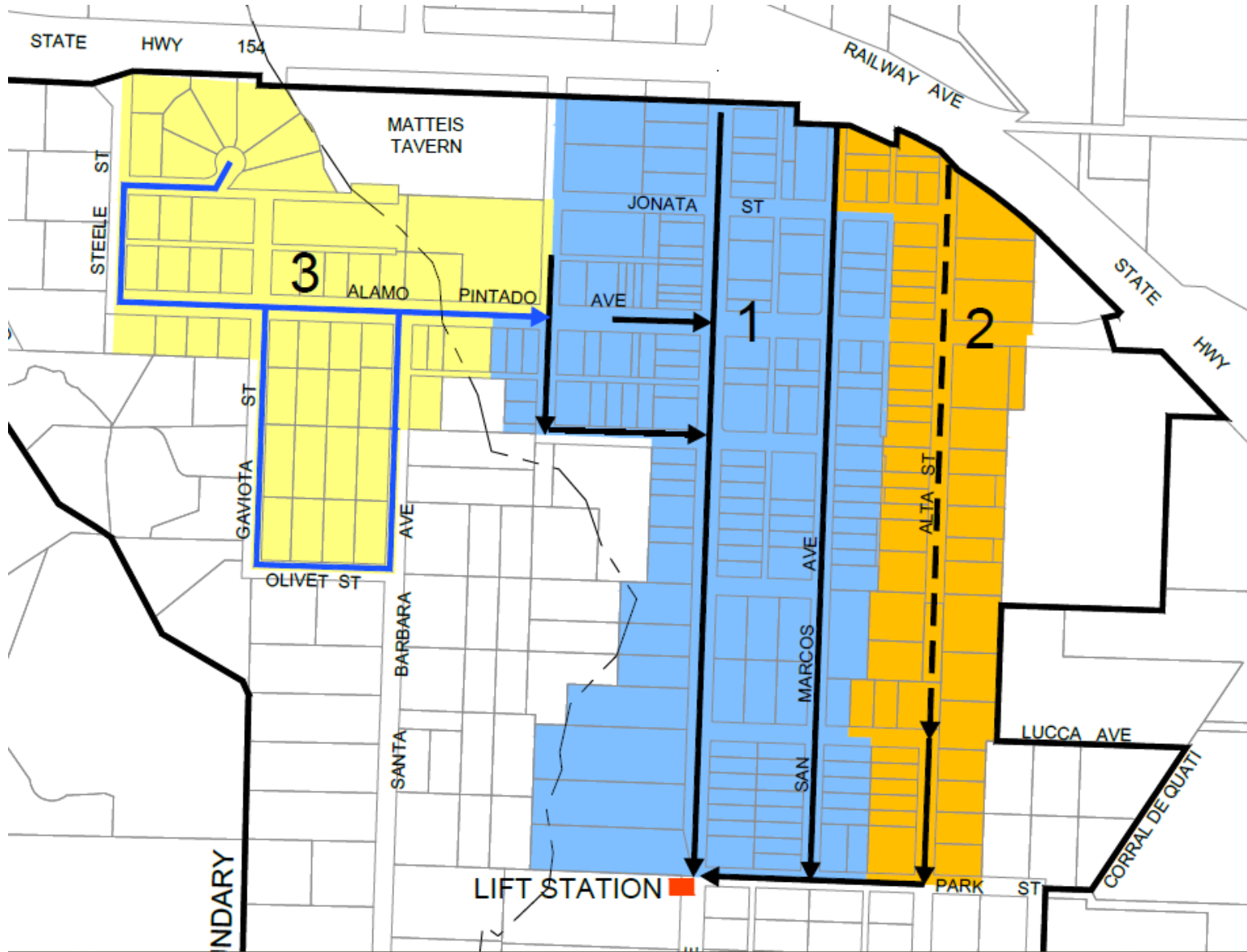
Zone 2 - Adjacent Residential areas to the East – Gravity system to Lift Station



Zone 3 - Residential areas to Northwest – STEP collection system to gravity system of Zone 1

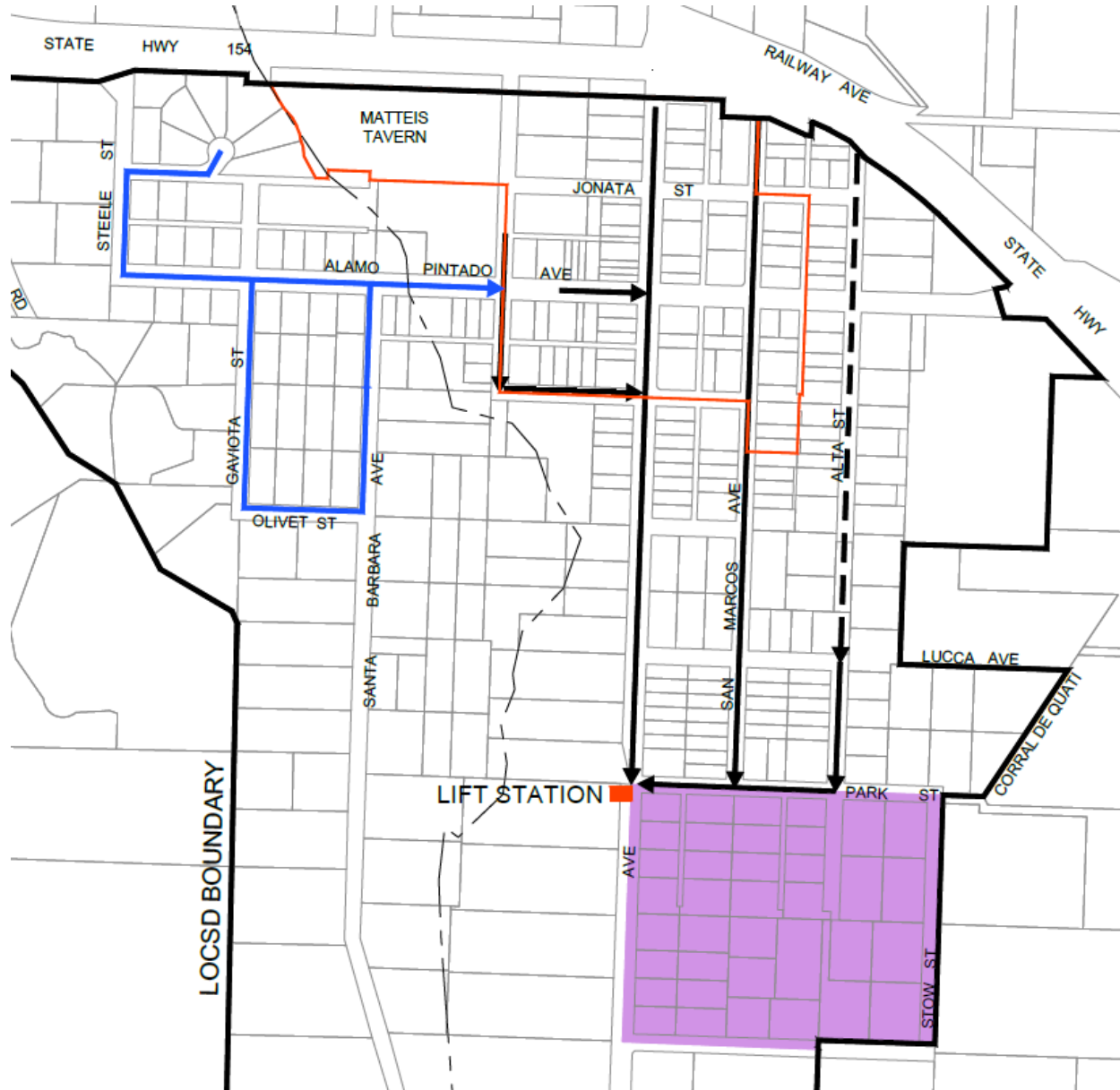


Zones 1-3



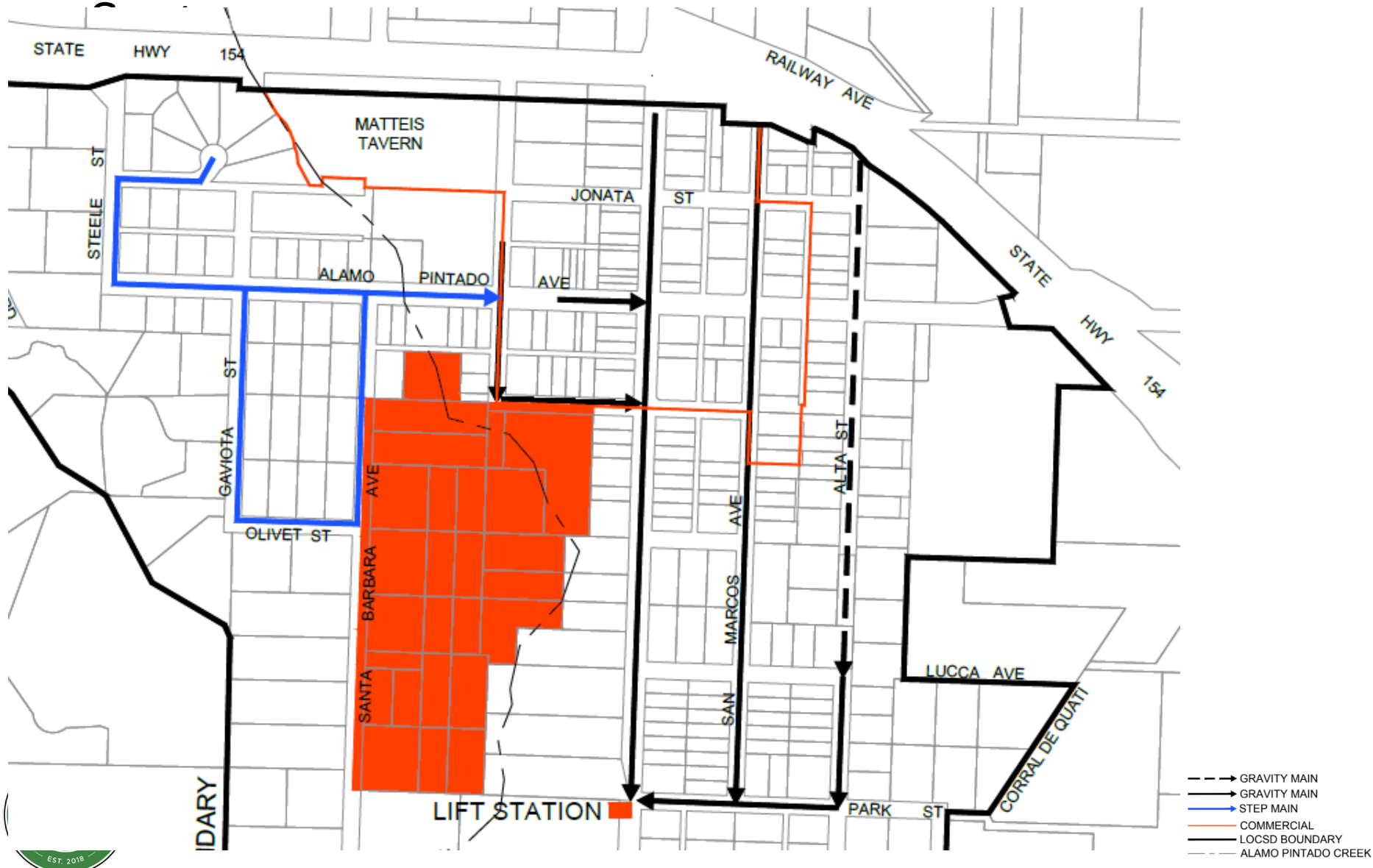
- GRAVITY MAIN
- GRAVITY MAIN
- STEP MAIN
- COMMERCIAL
- LOCSD BOUNDARY
- - - ALAMO PINTADO CREEK

Zone 4 - Step System to Lift Station

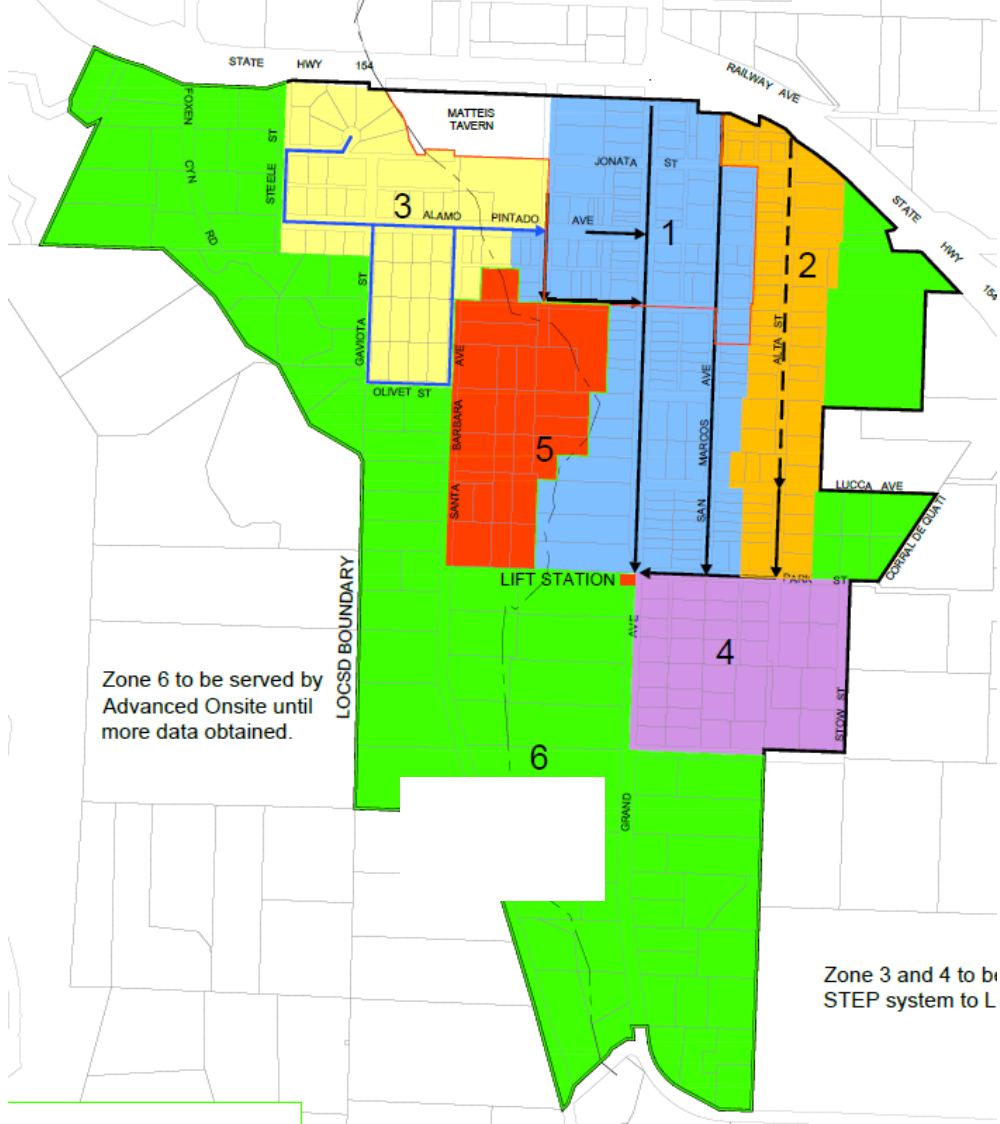


- GRAVITY MAIN
- GRAVITY MAIN
- STEP MAIN
- COMMERCIAL
- LOCSD BOUNDARY
- - - ALAMO PINTADO CREEK

Zone 5 - STEP System to Join Zone 3



Zone 6 - "Remainder of District" Served by Individual Advanced Onsite Systems



Zone 6 to be served by Advanced Onsite until more data obtained.

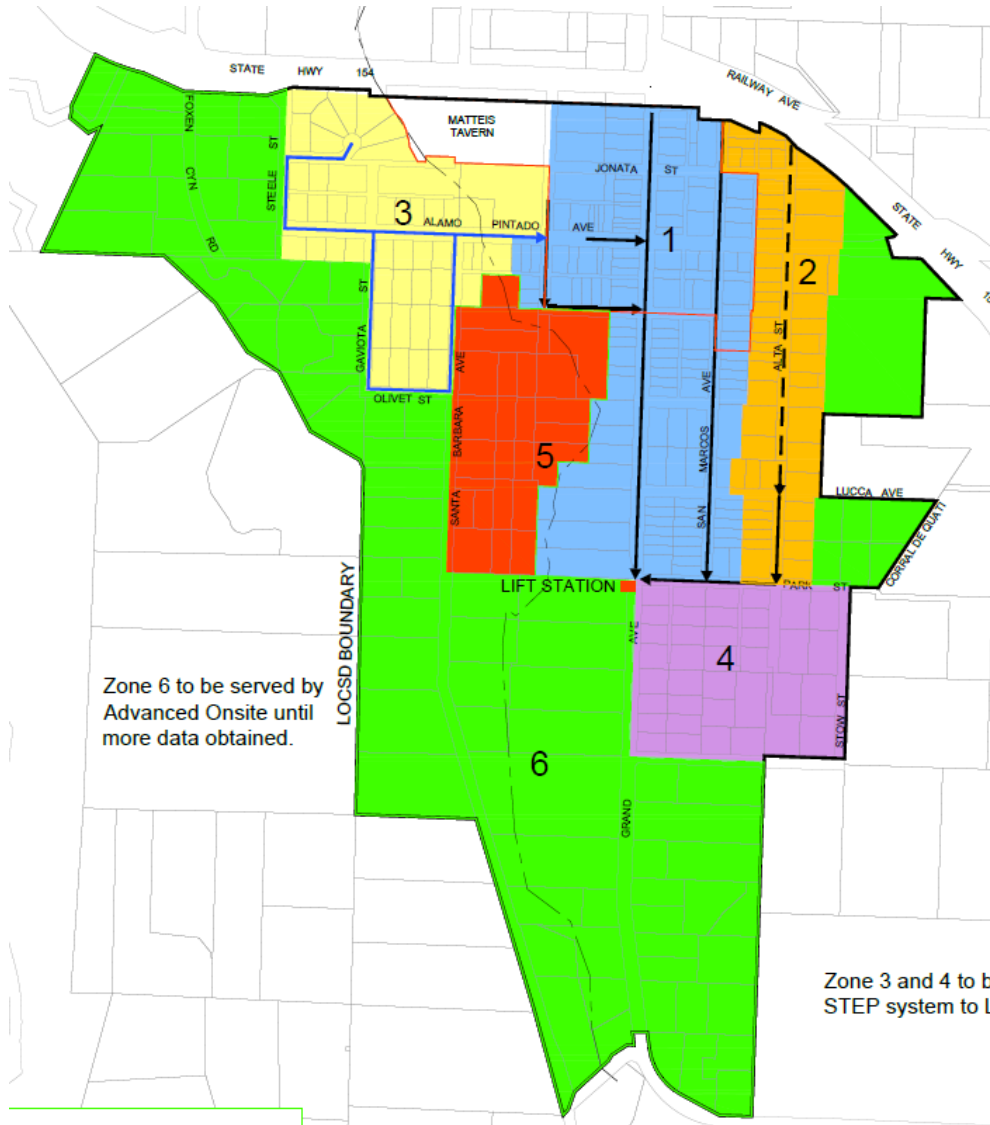
Zone 3 and 4 to be STEP system to L



- GRAVITY MAIN
- GRAVITY MAIN
- STEP MAIN
- COMMERCIAL
- LOCSD BOUNDARY
- ALAMO PINTADO CREEK

Considerations

- The number of zones within implementation phases will depend on Grant Funding
- The use of individual Advanced Onsite Systems in Zone 6 is expected to be limited to 30-50 years
- Inclusion of Los Olivos School and the Matties complex to be determined



- GRAVITY MAIN
- GRAVITY MAIN
- STEP MAIN
- COMMERCIAL
- LOCSD BOUNDARY
- ALAMO PINTADO CREEK