

COMMUNITY MEETING

May 30, 2019

Workshop No. 1

Technical Solution Options for Los Olivos Wastewater Collection and Reclamation



***Advisory:** This presentation is for discussion purposes only. The District is in the process of exploring several potential wastewater solutions. A preferred solution, final costs/fees, or assessments to District residents or property has **not** been determined.*

COMMUNITY MEETING

AGENDA

Introductions

Background

Option Development Process

Options Presentation

Question & Comments



COMMUNITY MEETING

INTRODUCTIONS

Agency Representatives
Government Representatives

PROCEEDINGS

Comment Forms & Speaker Slips
Website, Email, Mail Submittal

FUTURE WORKSHOPS

June 26 – Project Option Refinement
July 31 – Preferred Option Presentation



COMMUNITY MEETING

WORKSHOP OBJECTIVES

Receive community input on options

Determine the most economically viable, environmentally sound & permissible option

Develop a Project Description



BACKGROUND

Basis for Options Presented

- Coordination with:
 - California Regional Water Quality Control Board
 - Santa Barbara County Environmental Health Services
 - City of Solvang Public Works
 - County Planning and Development
 - 3rd District County Supervisor's Office
- Review and collection of Los Olivos specific data and wastewater system options
- Community & individual costs, benefit derived, feasibility and fairness
- Research of grant options and loan resources



BACKGROUND

- ✦ 1977 Special Problems District Designation
- ✦ Documented Septic Failures
- ✦ Pending RWQCB 2019 Study Release



WASTEWATER OPTIONS DEVELOPMENT

BASIS OF OPTIONS

2003
County Systems Report
(Questa Engineering, Corp.)

2010
Los Olivos Wastewater Management Plan
(MNS Engineering)

2013
Los Olivos Wastewater System Prelim Engineering Report
(AECOM)

2016 Update
Los Olivos Wastewater System Prelim Engineering Report
(AECOM)

2009
Santa Ynez Valley Community Plan
(Santa Barbara County)

2014
Local Agency Management Program
(Santa Barbara County)

2018-19
Meetings and Correspondence
Santa Barbara County Environmental Health Services
California Regional Water Quality Control Board
City of Solvang

2018-2019
Los Olivos Community Service District
Ad Hoc Technical Committee

OPTIONS

- 1. No Project**
- 2. Regional Solution**
 - 2a Solvang
 - 2b Santa Ynez
- 3. Local Solution**
 - 3a District-wide Collection
 - 3b Phased Collection

WASTEWATER OPTIONS

1. No Project Option

- ✦ Do Nothing - Remain Special Problems District
- ✦ Water Board determines Los Olivos groundwater is “impaired” due to septic use
- ✦ State mandated solution and price tag (i.e. Los Osos)
- ✦ Loss of local control (solution and cost)
- ✦ Loss of access to grants & other funding
- ✦ Inability to obtain building permits

WASTEWATER OPTIONS

2. Regional Option

- a. **Connect to Solvang w/Collection System and Interconnection**
- b. Connect to SYCSD w/Collection System and Interconnection

Solvang Plant Upgrade

- ✦ Upgrade and Expand Solvang Wastewater Treatment Plant
- ✦ Pay Los Olivos portion of Solvang Plant Upgrade

Solvang Plant to Los Olivos

- ✦ Site, Design, Permit and Construct
 - Metering Station - Sunny Fields
 - 4-Mile Forced Main - Alamo Pintado Corridor
 - Right of Way/Purchase/Lease/Utilities
- ✦ Upgrades
 - Interconnection Point – Sunny Fields
 - Pipeline – Sunny Fields to SR 246
- ✦ Permit 2 Alamo Pintado Creek Crossings

Los Olivos Collection System/Facility

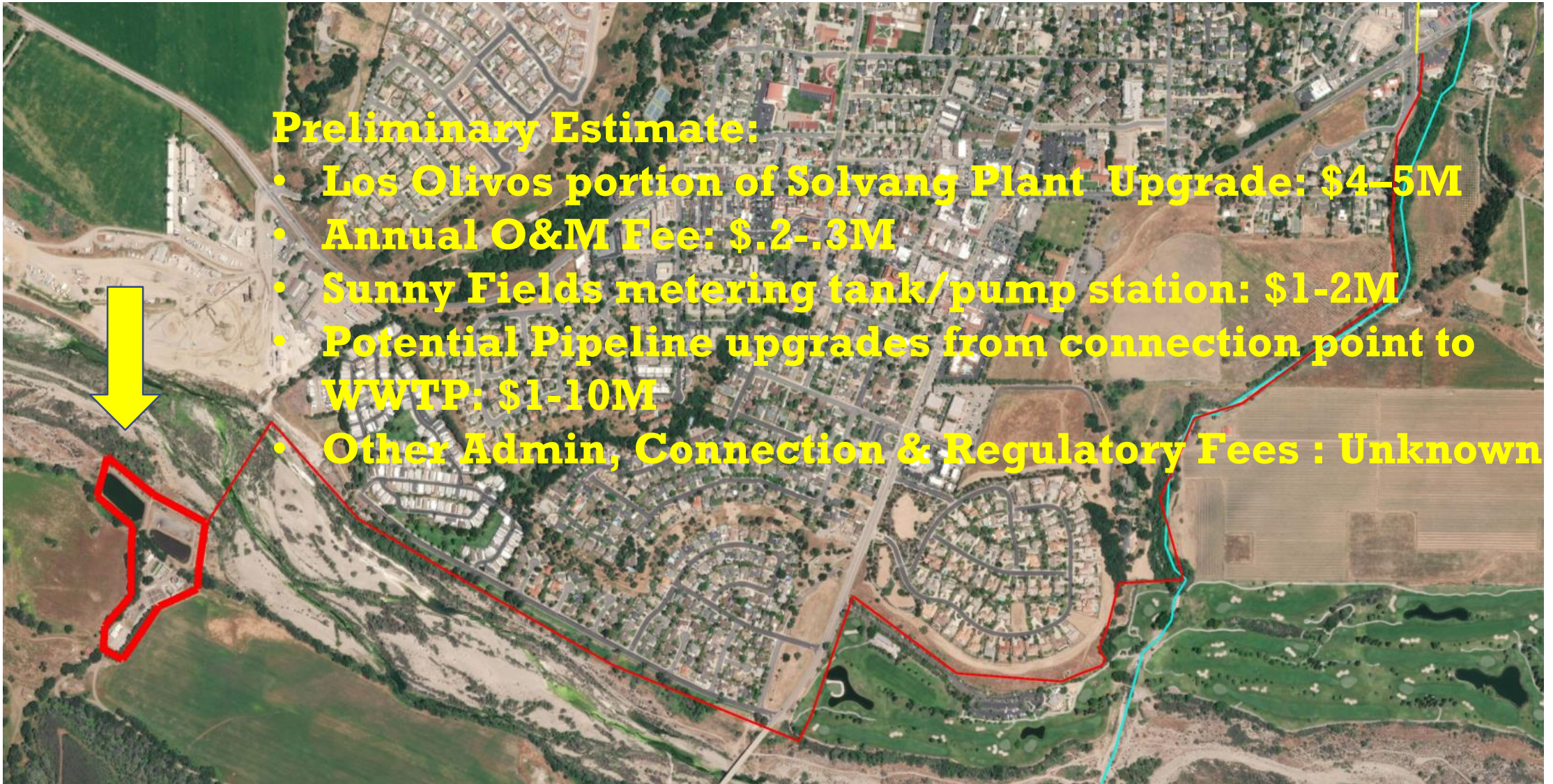
- ✦ Site, Design, Permit and Construct
 - Facility
 - District Lift Stations
 - Commercial Collection System
 - Connection/Equipment
 - Residential Collection System
 - Connection/Equipment
- ✦ Permit 2 Alamo Pintado Creek Crossings

Policy & Permitting

- ✦ SYV Community Plan Modification/Public Process
- ✦ Environmental Impact Report (EIR)
- ✦ Consultants: Engineering/Env./Survey/ROW Work

WASTEWATER OPTIONS – TO SOLVANG

Upgrade Solvang Wastewater Treatment Plant (WWTP)

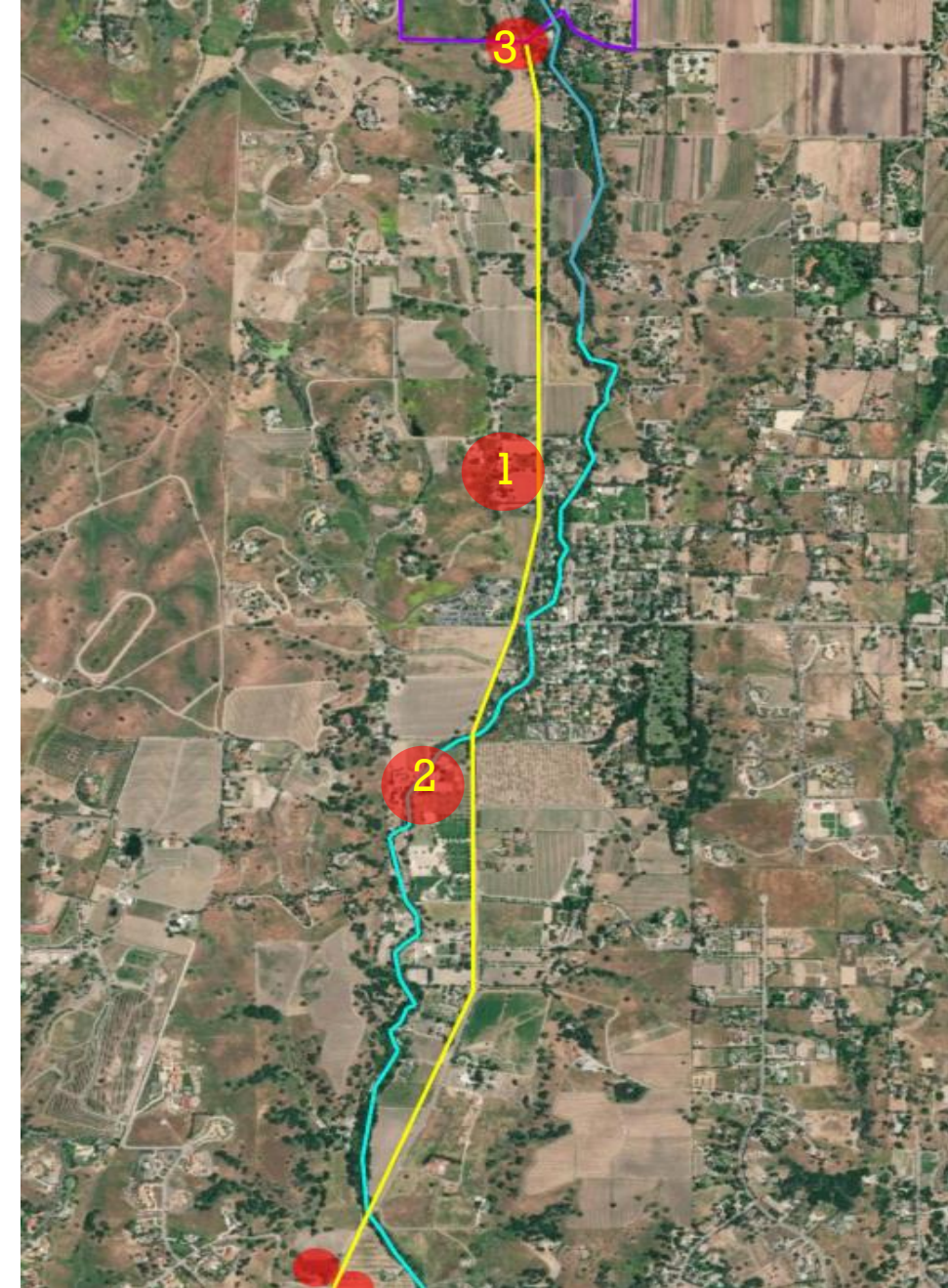


Preliminary Estimate:

- Los Olivos portion of Solvang Plant Upgrade: \$4-5M
- Annual O&M Fee: \$.2-.3M
- Sunny Fields metering tank/pump station: \$1-2M
- Potential Pipeline upgrades from connection point to WWTP: \$1-10M
- Other Admin, Connection & Regulatory Fees : Unknown

WASTEWATER OPTIONS - TO SOLVANG

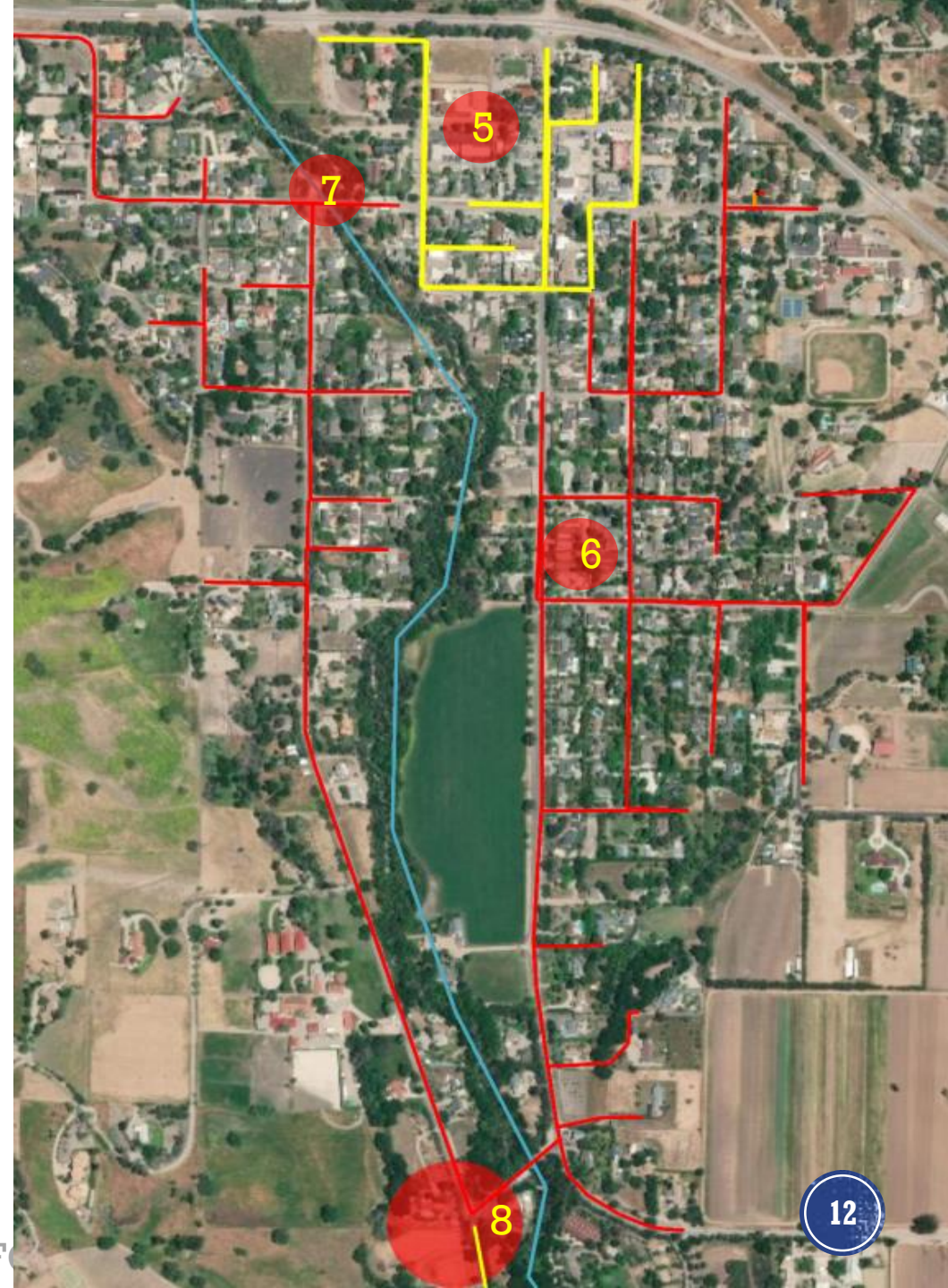
- 1 - Design & Construct 4 Miles of Sewer Main: \$8-13M
- 2 - Design & Construct 2X Creek Crossing – Alamo Pintado Crk: \$1-2M
- 3 - Site, Design and Construct Pretreatment Facility in Los Olivos: \$3-5M
- 4 - EIR and Regulatory/Planning Permissions: \$2-4M



5

WASTEWATER OPTIONS—REGIONAL OR LOCAL

- 5 - Design & Construct -Business Area Collection System
- 6 - Design & Construct - Residential Collection System
- 7 - Design/Permit/Const. Permit 2X Creek Crossing – Los Olivos
- 8 - Design & Construct – Lift Stations



REGIONAL VS COMMUNITY COMPARISON

	COMPONENT	REGIONAL	LOCAL
REGIONAL	Solvang Plant Upgrade		
	Upgrade & Expand Solvang Wastewater Treatment Plant (WWTP)	+	
	Pay for Los Olivos portion of Solvang Plant Upgrade	+	
	Solvang Plant to Los Olivos Collection Facility		
	Site, Design, Permit and Construct:	+	
	○ Metering Station - Sunny Fields	+	
	○ 4-Mile Forced Main - Alamo Pintado Corridor	+	
	○ Right of Way/Purchase/Lease/Utilities	+	
	Upgrades		
	○ Interconnection Point – Sunny Fields	+	
	○ Pipeline - Sunny Fields to SR 246	+	
	○ Permit 2X Creek Crossing – Alamo Pintado	+	
	REGIONAL & LOCAL EQUIVALENT	Los Olivos Collection Facility	
Site, Design, Permit and Construct:		=	=
○ Pretreatment Facility		=	=
○ District Lift Stations		=	=
○ Commercial Collection System / Connection & Equipment		=	=
○ Residential Collection System / Connection & Equipment		=	=
○ Permit 2 Alamo Pintado Creek Crossings		=	=
REGIONAL & LOCAL DIFFERENT	Policy & Permitting		
	SYV Community Plan Modification/Public Process	+	
	Enviro. Impact Report (EIR) vs. Mitigated Negative Declaration (MND)	+	-
	Consultants: Engineering/Env./Survey/Others	+	-

Magnitude Comparison (Regional vs Local) Initial Estimate*

Regional Schedule 3 Times Longer

Regional Cost 5 Times More

*Based on Independent Engineering Estimate

WASTEWATER SOLUTION OPTIONS SUMMARY

1. No Project

2. Regional Solution

2a Solvang

2b Santa Ynez

3. Local Solution

3a District-wide Collection

3b Phased Collection

PHASED COLLECTION OPTION

- ✦ 1977 Special Problems District Designation
- ✦ Documented Septic Failures
- ✦ Pending RWQCB determination of “Impaired” groundwater
 - Los Olivos priority based on findings
 - Results in Regulatory Oversight and Action



PHASED COLLECTION OPTION

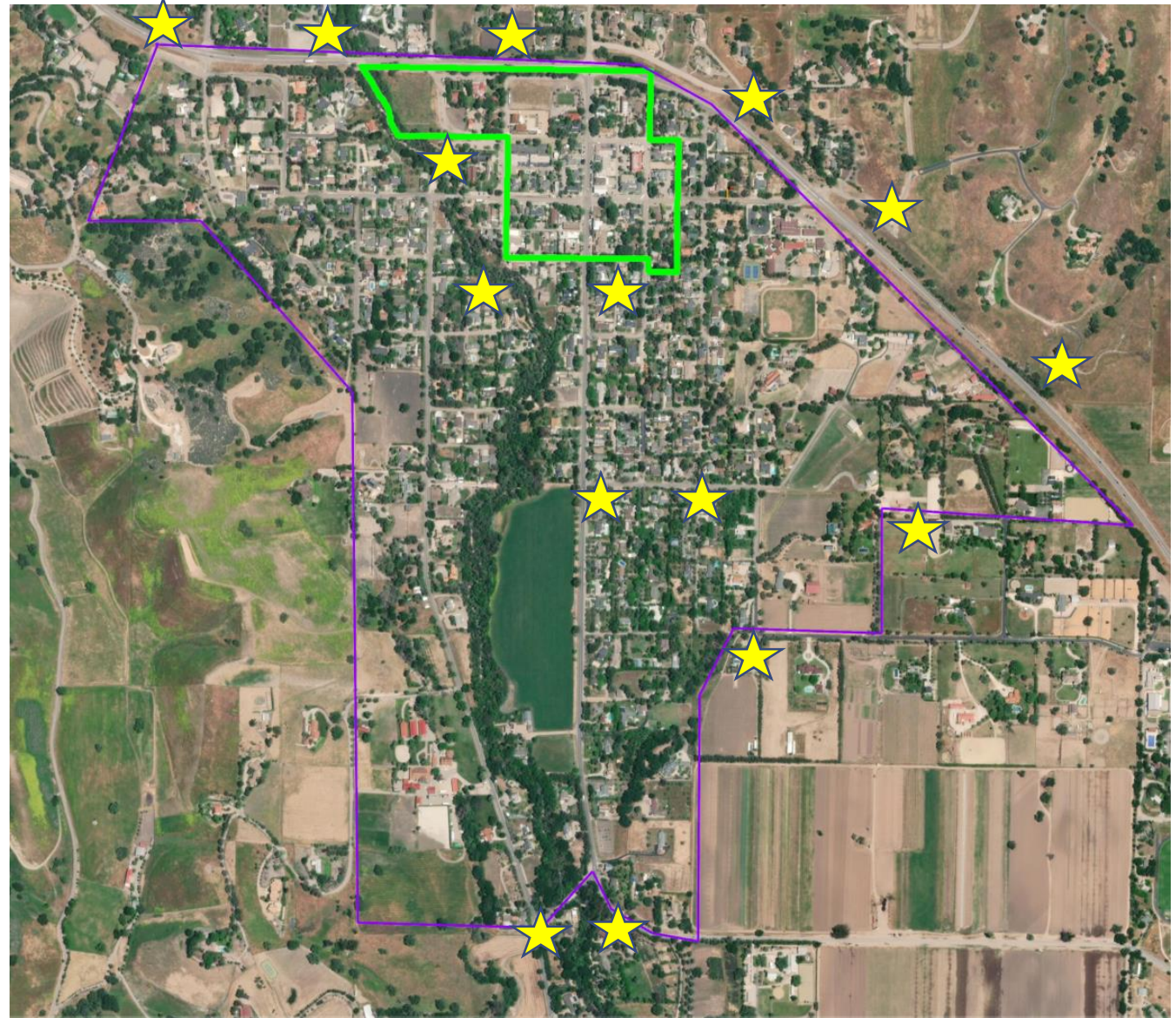
Phased & Targeted Strategy

Phase I

- ✦ Design and Install Core Collection & Reclamation System (with expansion capabilities)
 - May include adjacent residential lots
- ✦ Establish Onsite Residential Compliance Standards
- ✦ Create & Implement County Ground Water Monitoring Program
 - ✦ Conduct Ongoing Ground Water Sampling

Phase II

- ✦ Based on Groundwater Study Results (+/-5 Years):
 - Design and Install System Expansion
 - Systematic Residential Connection to Core System **AND/OR** pursue Residential Advanced Onsite Alternatives

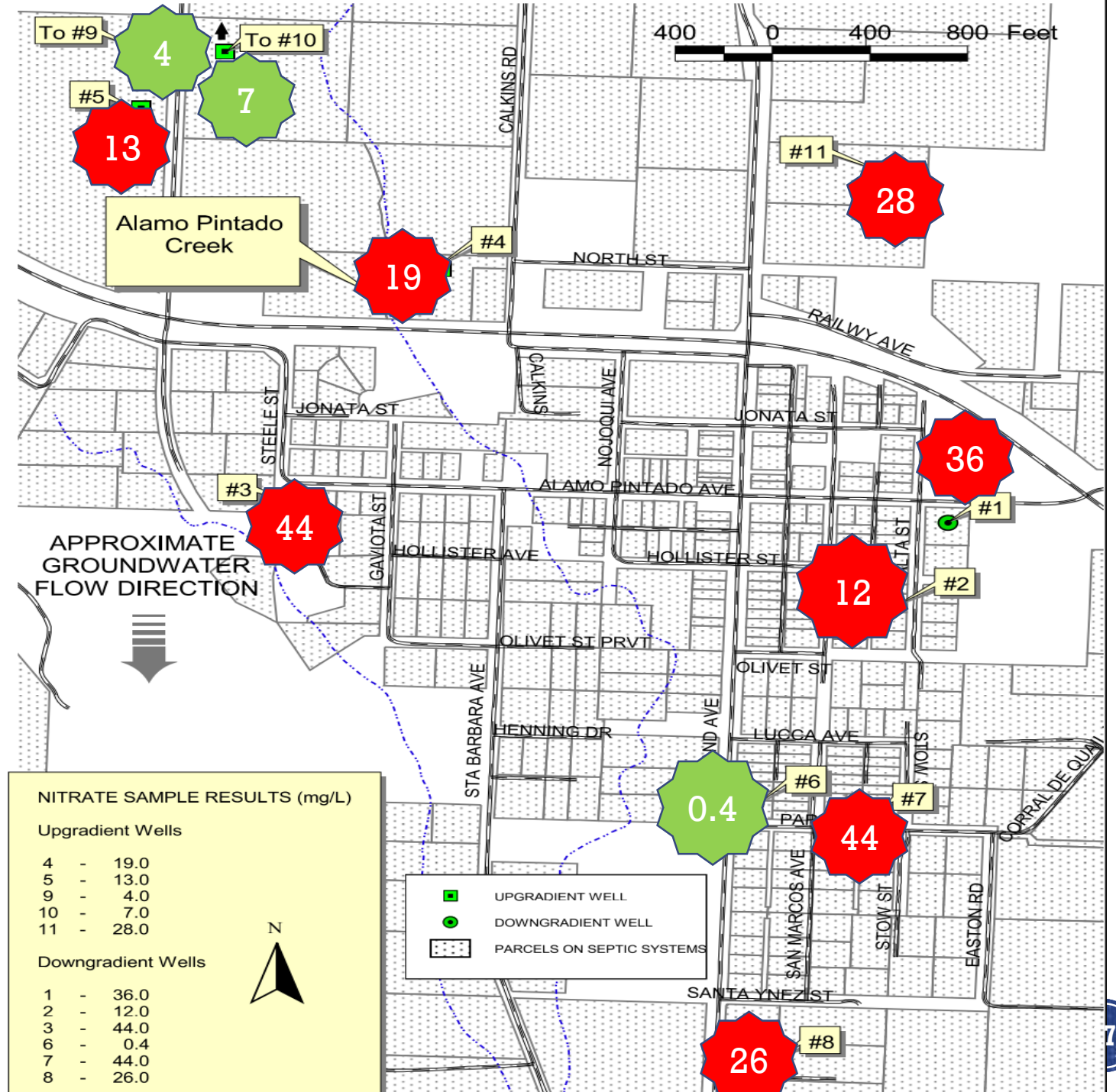


ONLY GROUNDWATER DATA AVAILABLE: 1977 SAMPLING RESULTS

10mg/liter = allowable limit

1977 Special Problems District Determination

2019 Additional Ground Water Sampling Data Needed



DISTRICT WIDE VS PHASED (1ST PHASE) IMPLEMENTATION

COMPONENT	DISTRICT WIDE	PHASED
Site, Design, Permit and Construct RECLAMATION Facility in Los Olivos	+	-
Design & Construct - Commercial Area Collection System	=	=
Design & Construct - Residential Collection System	+	-
Permit 2 Alamo Pintado Creek Crossings	+	-
Design & Construct – District Lift Stations	+	-
Commercial Parcel – Connection/Equipment	=	=
Residential Parcel – Connection/Equipment	+	-
Existing System Demolition/Closure	+	-
Operations & Maintenance (O&M)	+	-
Siting/ROW/Purchase/Lease/Utilities	+	-
Consultants: Engineering/Env./Survey/ROW Work	+	-
Mitigated Negative Declaration (MND)	=	=
Groundwater Monitoring	=	=

Phased (1st Phase) Implementation

- Schedule: 2X Faster
- Applicable Costs Borne by Users

RESIDENTIAL COLLECTION VS ADVANCED ONSITE

COMPONENT	RESIDENTIAL	ADVANCED ONSITE
Site, Design and Construct TREATMENT Facility in Los Olivos	+	-
Design & Construct – Residential Collection System	+	-
Permit 2 Alamo Pintado Creek Crossings	+	-
Design & Construct – District Lift Stations	+	-
Residential Parcel – Connection/Equipment	+	-
Advanced Onsite Upgrades – When Required	-	+
Monthly Usage Fees	+	-
Existing System Demolition/Closure	+	-
Operations & Maintenance (O&M)	+	-
Siting/ROW/Purchase/Lease/Utilities	+	-
Consultants: Engineering/Env./Survey/ROW Work	+	-
Mitigated Negative Declaration (MND)	+	-
Groundwater Monitoring	=	=

OPTION COMPARISON

OPTION	COMPLEXITY	SCHEDULE	COST	OVERALL
No Project				
Regional	+	+	+	+
Local	-	-	-	-

LOCAL OPTION	COMPLEXITY	SCHEDULE	COST	OVERALL
District-wide	+	+	+	+
Phased	-	-	-	-

COMMENTS / QUESTIONS

Agency & Public Comment

- No Project Option
- Regional Solution
 - Solvang
 - Santa Ynez
- Local Option
 - District wide Collection
 - Phased Collection
- Options Not Considered?

Next Steps

- June 12** Regular Board Meeting
- June 26** Workshop 2: Project Options Refinement
- July 10** Regular Board Meeting
- July 31** Workshop 3 Preferred Option Presentation
- Aug 14** Regular Board Meeting



REMINDER:

- This briefing is for discussion purposes only.
- The District is in the process of exploring several potential solutions.
- A preferred solution, final costs/fees, or assessments has not been determined.